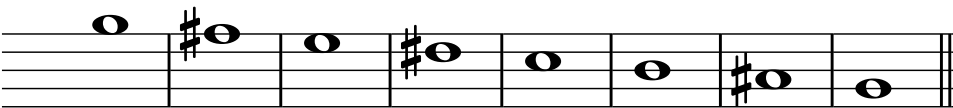


## Grade 5 Theory Revision

Write in the correct clef for each example to form a minor scale. Remember, the scale might be harmonic OR melodic and you can choose from the following clefs: Treble, Bass, Tenor & Alto:

1. 

2. 

3. 

Describe the following intervals fully:

1. 

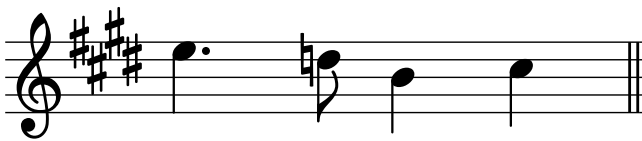
2. 

3. 

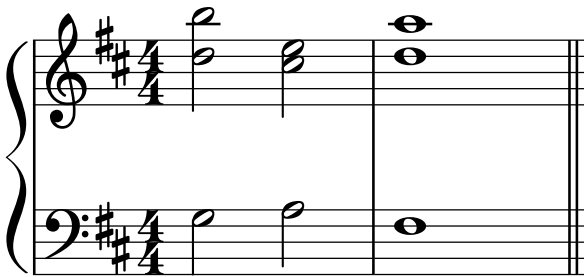
4. 

# Two Bees Music School

The following bar has been transposed up a major 2nd. There are some mistakes. Put a tick or cross under the key signature and each note to show whether it has been transposed correctly:



Describe fully the 3 chords below as I, II, IV or V and indicate the inversions using the letters a, b or c:



Indicate suitable chords for the two cadences below and state each type of cadence:



## ANSWERS:

### Scales

1. Alto Clef (A melodic minor)
2. Bass Clef (B harmonic minor)
3. Treble Clef (F harmonic minor)

### Intervals

1. Augmented 6th
2. Minor 6th
3. Diminished 5th
4. Minor 3rd

### Transposition

yes, yes, no, no, yes

### Chords

IVa, Va, Ib

### Cadences

Cadence 1 - Imperfect (I, V)  
Cadence 2 - Perfect (II, V, I)